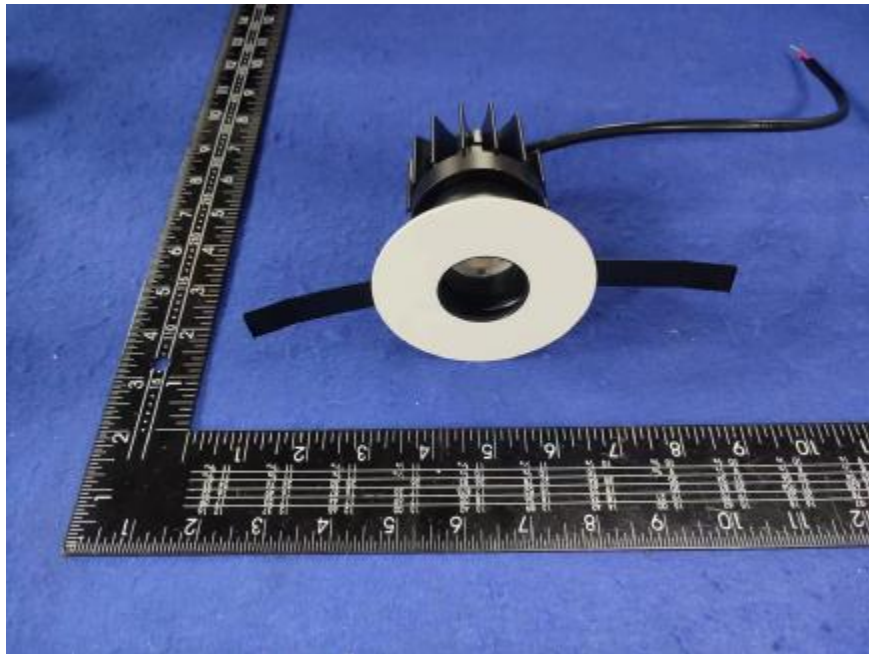


Luminaire Photograph



Light Output Ratio:	63.9%	
Luminaire Power:	10.13 W	
SHR Nominal:	0.75	Calculated using the TM5
SHR Maximum:	0.80	fine grid method.

C Range: 0 - 360DEG
C Interval: 30.0DEG
Test Speed: HIGH
Temperature: 25.3 °C
Operators: zoe
Test Date: 2024-5-23

γ Range: 0 - 180DEG
γ Interval: 1.0DEG
Test System: EVERFINE GO-SPEX500_V1 SYSTEM V2.00.461
Humidity: 65.0%
Test Distance: 3.160m [K=1.0000]
Remarks: LAMP: BXRE-30G10TH-A-83 Ra: 90
LENS: PM-1082C-WH 50R
NO DRIVER: 300mA
30minutes warm-up

LUMINOUS INTENSITY DISTRIBUTION DIAGRAM

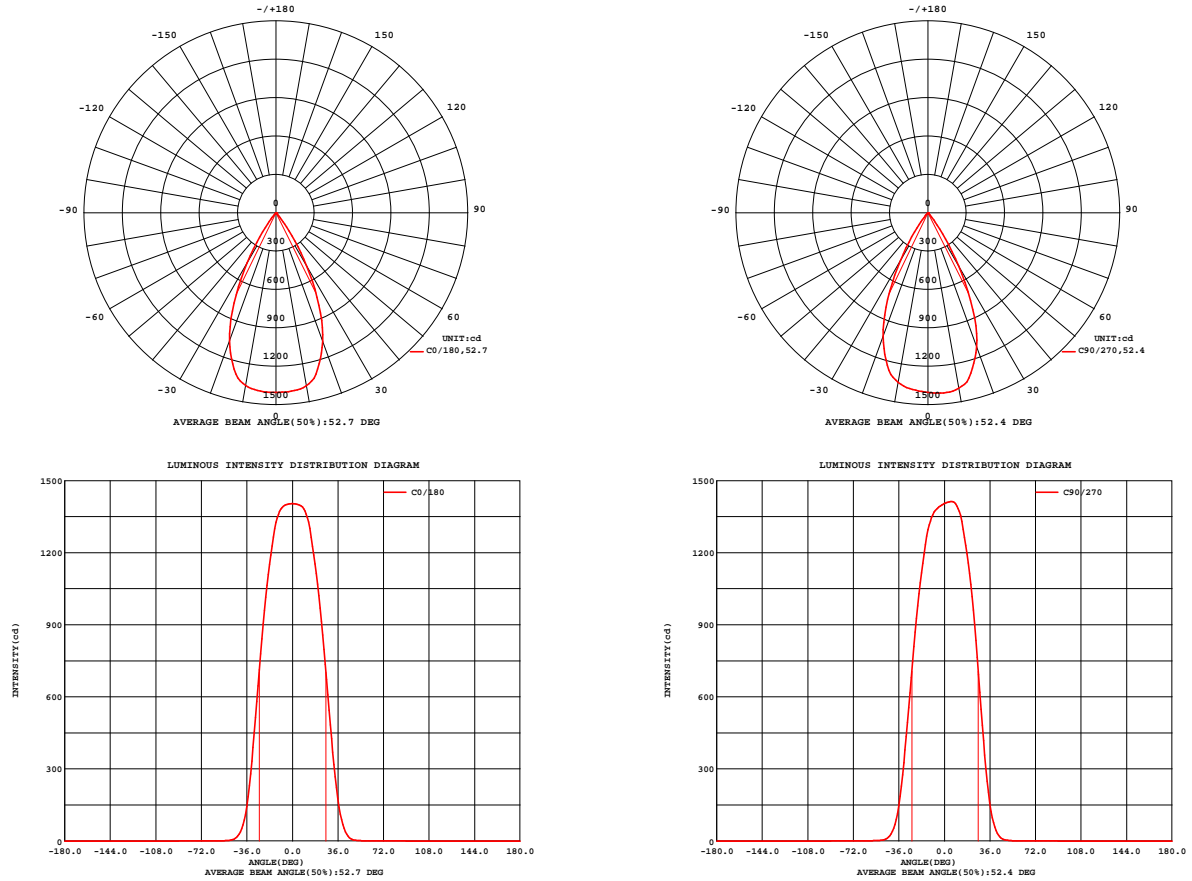


Fig. C0/C180

Fig. C90/C270

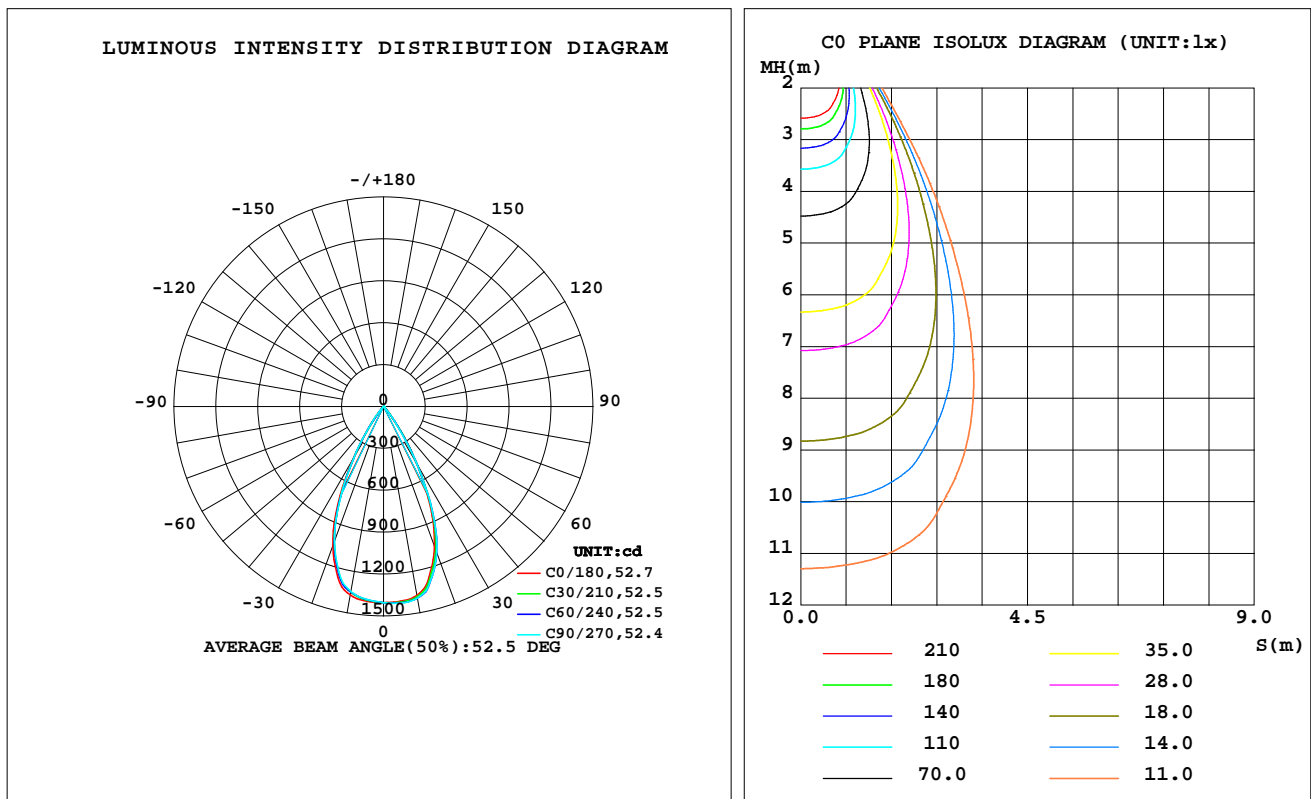
C Range: 0 - 360DEG
C Interval: 30.0DEG
Test Speed: HIGH
Temperature:25.3℃
Operators:zoe
Test Date:2024-5-23

γ Range: 0 - 180DEG
γ Interval: 1.0DEG
Test System:EVERFINE GO-SPEX500_V1 SYSTEM V2.00.461
Humidity:65.0%
Test Distance:3.160m [K=1.0000]
Remarks: LAMP:BXRE-30G10TH-A-83 Ra:90
LENS:PM-1082C-WH 50R
NO DRIVER:300mA
30minutes warm-up

LUMINAIRE PHOTOMETRIC TEST REPORT

Test:U:33.764V I:0.3000A P:10.129W PF:1.0000 Freq:0Hz Lamp Flux:1537.95x1 lm		
NAME: 2318.113-LEE-24-HE	TYPE:	WEIGHT:
SPEC.: 3000K	DIM.:	SERIAL No.: 2405230577
MFR.: RISE	SUR.: 0.000961625m2	Shielding Angle:

DATA OF LAMP		PHOTOMETRIC DATA Eff: 97.00 lm/W			
MODEL	Brideglux	I _{max} (cd)	1413	S/MH(C0/180)	0.78
NOMINAL POWER(W)	10	LOR(%)	63.9	S/MH(C90/270)	0.77
RATED VOLTAGE(V)	34	TOTAL FLUX(lm)	982.49	η UP,DN(C0-180)	0.0,32.8
NOMINAL FLUX(lm)	1537.95	CIE CLASS	DIRECT	η UP,DN(C180-360)	0.0,31.1
LAMPS INSIDE	1	η up(%)	0.0	CIBSE SHR NOM	0.75
TEST VOLTAGE(V)	34	η down(%)	63.9	CIBSE SHR MAX	0.80



C Range: 0 - 360DEG
C Interval: 30.0DEG
Test Speed: HIGH
Temperature:25.3℃
Operators:zoe
Test Date:2024-5-23

γ Range: 0 - 180DEG
γ Interval: 1.0DEG
Test System:EVERFINE GO-SPEX500_V1 SYSTEM V2.00.461
Humidity:65.0%
Test Distance:3.160m [K=1.0000]
Remarks: LAMP:BXRE-30G10TH-A-83 Ra:90
LENS:PM-1082C-WH 50R
NO DRIVER:300mA
30minutes warm-up

ZONAL FLUX DIAGRAM

ZONAL FLUX DIAGRAM:

γ	C0	C45	C90	C135	C180	C225	C270	C315	γ	Φ zone	Φ total	%lum,lamp
10	1373	1388	1393	1391	1371	1351	1346	1354	0- 10	132.8	132.8	13.5,8.63
20	1069	1103	1115	1102	1064	1035	1029	1035	10- 20	349.8	482.6	49.1,31.4
30	483.3	491.2	481.1	471.3	450.8	434.3	434.7	453.1	20- 30	352.0	834.6	84.9,54.3
40	68.99	65.85	58.22	53.74	50.85	47.68	52.71	63.58	30- 40	132.6	967.1	98.4,62.9
50	3.175	3.095	2.769	2.738	2.641	3.106	3.138	2.979	40- 50	13.57	980.7	99.8,63.8
60	0.6603	0.6352	0.4410	0.4260	0.4869	0.7897	0.8370	0.6959	50- 60	1.267	982.0	99.9,63.8
70	0.2249	0.2137	0.1057	0.0818	0.1036	0.2632	0.2936	0.2434	60- 70	0.3253	982.3	100,63.9
80	0.0961	0.0781	0.0691	0.0622	0.0754	0.0970	0.1148	0.1010	70- 80	0.1470	982.4	100,63.9
90	0	0	0	0	0	0	0	0	80- 90	0.0470	982.5	100,63.9
100	0	0	0	0	0	0	0	0	90-100	0	982.5	100,63.9
110	0	0	0	0	0	0	0	0	100-110	0	982.5	100,63.9
120	0	0	0	0	0	0	0	0	110-120	0	982.5	100,63.9
130	0	0	0	0	0	0	0	0	120-130	0	982.5	100,63.9
140	0	0	0	0	0	0	0	0	130-140	0	982.5	100,63.9
150	0	0	0	0	0	0	0	0	140-150	0	982.5	100,63.9
160	0	0	0	0	0	0	0	0	150-160	0	982.5	100,63.9
170	0	0	0	0	0	0	0	0	160-170	0	982.5	100,63.9
180	0	0	0	0	0	0	0	0	170-180	0	982.5	100,63.9
DEG	LUMINOUS INTENSITY:cd									UNIT:lm		

C Range: 0 - 360DEG
C Interval: 30.0DEG
Test Speed: HIGH
Temperature:25.3℃
Operators:zoe
Test Date:2024-5-23

γ Range: 0 - 180DEG
 γ Interval: 1.0DEG
Test System:EVERFINE GO-SPEX500_V1 SYSTEM V2.00.461
Humidity:65.0%
Test Distance:3.160m [K=1.0000]
Remarks: LAMP:BXRE-30G10TH-A-83 Ra:90
LENS:PM-1082C-WH 50R
NO DRIVER:300mA
30minutes warm-up

LUMINANCE LIMITATION CURVES

Test:U:33.764V I:0.3000A P:10.129W PF:1.0000 Freq:0Hz
Lamp Flux:1537.95x1 lm

NAME: 2318.113-LEE-24-HE

TYPE:

WEIGHT:

SPEC.: 3000K

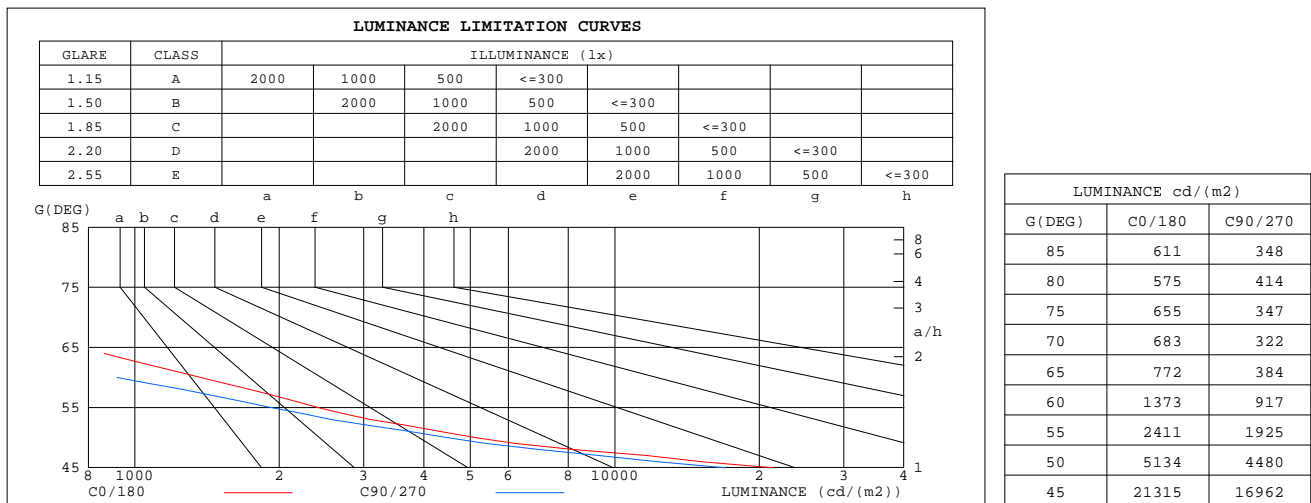
DIM.:

SERIAL No.: 2405230577

MFR.: RISE

SUR.: 0.000961625m2

Shielding Angle:



C Range: 0 - 360DEG
C Interval: 30.0DEG
Test Speed: HIGH
Temperature:25.3℃
Operators:zoe
Test Date:2024-5-23

γ Range: 0 - 180DEG
γ Interval: 1.0DEG
Test System:EVERFINE GO-SPEX500_V1 SYSTEM V2.00.461
Humidity:65.0%
Test Distance:3.160m [K=1.0000]
Remarks: LAMP:BXRE-30G10TH-A-83 Ra:90
LENS:PM-1082C-WH 50R
NO DRIVER:300mA
30minutes warm-up

CU AND LUMINAIRE BUDGETARY ESTIMATE DIAGRAM

Test:U:33.764V I:0.3000A P:10.129W PF:1.0000 Freq:0Hz
Lamp Flux:1537.95x1 lm

NAME: 2318.113-LEE-24-HE

TYPE:

WEIGHT:

SPEC.: 3000K

DIM.:

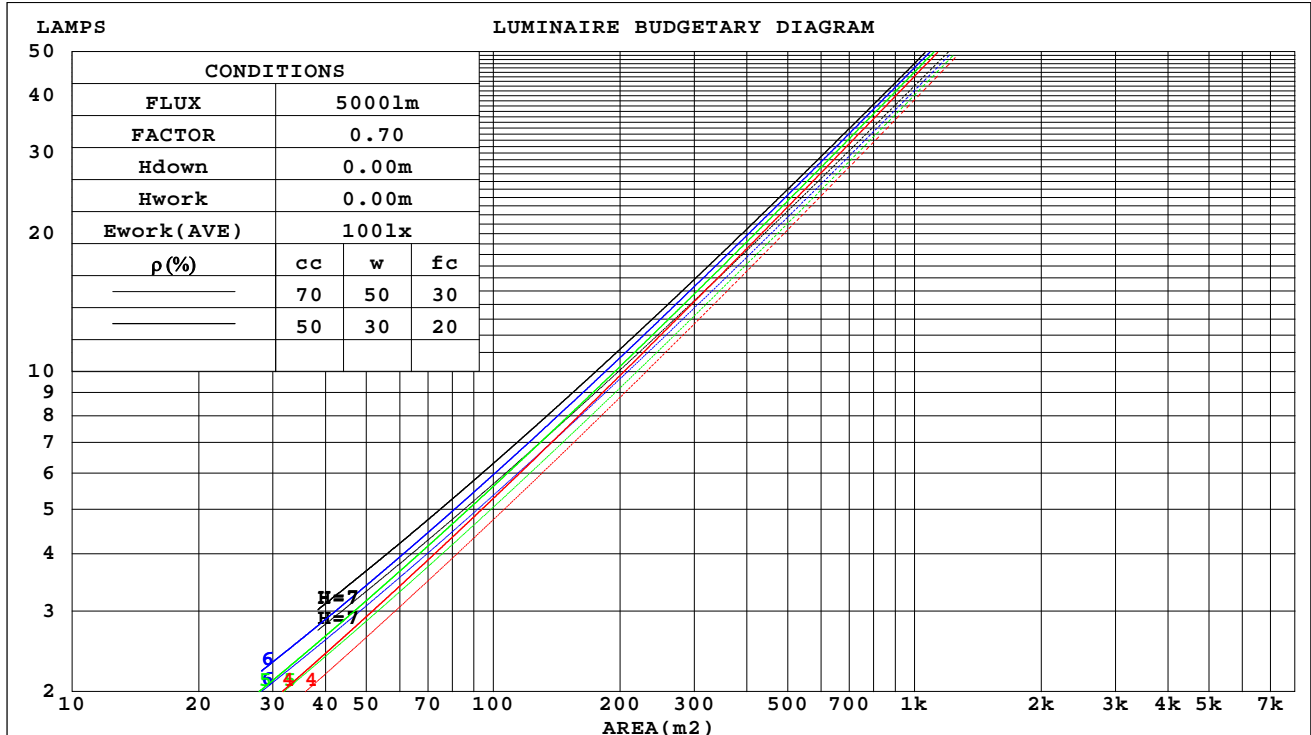
SERIAL No.: 2405230577

MFR.: RISE

SUR.: 0.000961625m2

Shielding Angle:

ρ_{cc}	80%			70%			50%			30%			10%			0
ρ_w	50%	30%	10%	50%	30%	10%	50%	30%	10%	50%	30%	10%	50%	30%	10%	0
ρ_{fc}	20%			20%			20%			20%			20%			0
RCR	RCR:Room Cavity Ratio															



C Range: 0 - 360DEG
C Interval: 30.0DEG
Test Speed: HIGH
Temperature:25.3 °C
Operators:zoe
Test Date:2024-5-23

γ Range: 0 - 180DEG
 γ Interval: 1.0DEG
Test System:EVERFINE GO-SPEX500_V1 SYSTEM V2.00.461
Humidity:65.0%
Test Distance:3.160m [K=1.0000]
Remarks: LAMP:BXRE-30G10TH-A-83 Ra:90
LENS:PM-1082C-WH 50R
NO DRIVER:300mA
30minutes warm-up

WEC AND CCEC

Test:U:33.764V I:0.3000A P:10.129W PF:1.0000 Freq:0Hz Lamp Flux:1537.95x1 lm		
NAME: 2318.113-LEE-24-HE	TYPE:	WEIGHT:
SPEC.: 3000K	DIM.:	SERIAL No.: 2405230577
MFR.: RISE	SUR.: 0.000961625m2	Shielding Angle:

pcc	80%			70%			50%			30%			10%			0	
pw	50%	30%	10%	50%	30%	10%	50%	30%	10%	50%	30%	10%	50%	30%	10%	0	
pfc	20%			20%			20%			20%			20%			0	
RCR	RCR:Room Cavity Ratio						Wall Exitance Coefficients(WEC)										
0.0																	
1.0	.104	.059	.019	.100	.057	.018	.092	.053	.017	.084	.049	.016	.078	.045	.015		
2.0	.099	.054	.017	.095	.052	.016	.088	.049	.015	.082	.046	.014	.077	.043	.014		
3.0	.094	.050	.015	.091	.049	.015	.085	.046	.014	.080	.044	.013	.075	.041	.013		
4.0	.089	.046	.014	.087	.045	.013	.082	.043	.013	.077	.041	.013	.073	.040	.012		
5.0	.085	.043	.013	.083	.042	.012	.079	.041	.012	.075	.039	.012	.071	.038	.011		
6.0	.081	.041	.012	.079	.040	.012	.076	.039	.011	.072	.037	.011	.069	.036	.011		
7.0	.078	.038	.011	.076	.038	.011	.073	.037	.011	.070	.036	.010	.067	.035	.010		
8.0	.075	.036	.010	.073	.036	.010	.070	.035	.010	.067	.034	.010	.065	.033	.010		
9.0	.072	.035	.010	.070	.034	.010	.068	.033	.009	.065	.033	.009	.063	.032	.009		
10.0	.069	.033	.009	.068	.033	.009	.065	.032	.009	.063	.031	.009	.061	.031	.009		

pcc	80%			70%			50%			30%			10%			0
pw	50%	30%	10%	50%	30%	10%	50%	30%	10%	50%	30%	10%	50%	30%	10%	0
pfc	20%			20%			20%			20%			20%			0
RCR	RCR:Room Cavity Ratio						Ceiling Cavity Exitance Coefficients(CCEC)									
0.0	.122	.122	.122	.104	.104	.104	.071	.071	.071	.041	.041	.041	.013	.013	.013	
1.0	.109	.101	.093	.093	.086	.080	.064	.059	.056	.037	.034	.032	.012	.011	.010	
2.0	.098	.085	.073	.084	.073	.063	.058	.050	.044	.033	.029	.026	.011	.009	.008	
3.0	.090	.072	.059	.077	.063	.051	.053	.043	.036	.031	.025	.021	.010	.008	.007	
4.0	.083	.063	.048	.071	.054	.041	.049	.038	.029	.028	.022	.017	.009	.007	.006	
5.0	.077	.055	.039	.066	.048	.034	.046	.033	.024	.026	.020	.014	.009	.006	.005	
6.0	.072	.049	.033	.062	.043	.029	.043	.030	.020	.025	.018	.012	.008	.006	.004	
7.0	.068	.044	.028	.058	.038	.024	.040	.027	.017	.023	.016	.010	.008	.005	.003	
8.0	.064	.040	.024	.055	.035	.021	.038	.025	.015	.022	.014	.009	.007	.005	.003	
9.0	.061	.037	.021	.053	.032	.018	.036	.023	.013	.021	.013	.008	.007	.004	.003	
10.0	.058	.034	.018	.050	.030	.016	.035	.021	.011	.020	.012	.007	.007	.004	.002	

C Range: 0 - 360DEG
C Interval: 30.0DEG
Test Speed: HIGH
Temperature:25.3℃
Operators:zoe
Test Date:2024-5-23

γ Range: 0 - 180DEG
γ Interval: 1.0DEG
Test System:EVERFINE GO-SPEX500_V1 SYSTEM V2.00.461
Humidity:65.0%
Test Distance:3.160m [K=1.0000]
Remarks: LAMP:BXRE-30G10TH-A-83 Ra:90
LENS:PM-1082C-WH 50R
NO DRIVER:300mA
30minutes warm-up

UGR(Unified Glare Rating) Table

Test:U:33.764V I:0.3000A P:10.129W PF:1.0000 Freq:0Hz Lamp Flux:1537.95x1 lm										
NAME: 2318.113-LEE-24-HE					TYPE:			WEIGHT:		
SPEC.: 3000K					DIM.:			SERIAL No.: 2405230577		
MFR.: RISE					SUR.: 0.000961625m2			Shielding Angle:		
ceiling/cavity	0.7	0.7	0.5	0.5	0.3	0.7	0.7	0.5	0.5	0.3
walls	0.5	0.3	0.5	0.3	0.3	0.5	0.3	0.5	0.3	0.3
working plane	0.2	0.2	0.2	0.2	0.2	0.2	0.2	0.2	0.2	0.2
Room dimensions	Viewed crosswise					Viewed endwise				
x = 2H y = 2H	20.1	20.9	20.3	21.1	21.3	19.8	20.7	20.1	20.9	21.0
3H	19.9	20.7	20.2	20.9	21.1	19.7	20.5	19.9	20.7	20.9
4H	19.8	20.6	20.1	20.8	21.0	19.6	20.3	19.9	20.6	20.8
6H	19.7	20.4	20.0	20.7	20.9	19.5	20.2	19.8	20.4	20.7
8H	19.7	20.4	20.0	20.6	20.9	19.5	20.1	19.8	20.4	20.6
12H	19.6	20.3	20.0	20.6	20.8	19.4	20.1	19.7	20.3	20.6
4H 2H	19.8	20.6	20.1	20.8	21.0	19.6	20.3	19.9	20.6	20.8
3H	19.6	20.3	20.0	20.6	20.8	19.4	20.1	19.7	20.3	20.6
4H	19.6	20.1	19.9	20.4	20.7	19.3	19.9	19.7	20.2	20.5
6H	19.5	20.0	19.8	20.3	20.6	19.2	19.7	19.6	20.1	20.4
8H	19.4	19.9	19.8	20.2	20.6	19.2	19.6	19.6	20.0	20.4
12H	19.4	19.8	19.8	20.2	20.5	19.1	19.6	19.5	19.9	20.3
8H 4H	19.4	19.9	19.8	20.2	20.6	19.2	19.6	19.6	20.0	20.4
6H	19.3	19.7	19.7	20.1	20.5	19.1	19.5	19.5	19.9	20.3
8H	19.2	19.6	19.7	20.0	20.4	19.0	19.4	19.5	19.8	20.2
12H	19.2	19.5	19.7	19.9	20.4	19.0	19.2	19.4	19.7	20.2
12H 4H	19.4	19.8	19.8	20.2	20.5	19.1	19.6	19.5	19.9	20.3
6H	19.2	19.6	19.7	20.0	20.4	19.0	19.4	19.5	19.8	20.2
8H	19.2	19.5	19.7	19.9	20.4	19.0	19.2	19.4	19.7	20.2
Variations with the observer position at spacings(CIE Pub.117):										
S = 1.0H	+ 4.4 / -20.7					+ 4.1 / -21.7				
1.5H	+ 7.2 / -18.3					+ 6.8 / -18.4				
2.0H	+ 8.4 / - 9.0					+ 7.9 / - 9.4				

CIE Pub.117, 1538 lm Total Lamp Luminous Flux Correct (8log(F/F0) = 1.5)
Area: 0.000961625 m2

C Range: 0 - 360DEG
C Interval: 30.0DEG
Test Speed: HIGH
Temperature:25.3℃
Operators:zoe
Test Date:2024-5-23

γ Range: 0 - 180DEG
γ Interval: 1.0DEG
Test System:EVERFINE GO-SPEX500_V1 SYSTEM V2.00.461
Humidity:65.0%
Test Distance:3.160m [K=1.0000]
Remarks: LAMP:BXRE-30G10TH-A-83 Ra:90
LENS:PM-1082C-WH 50R
NO DRIVER:300mA
30minutes warm-up

UTILIZATION FACTORS TABLE

Test:U:33.764V I:0.3000A P:10.129W PF:1.0000 Freq:0Hz Lamp Flux:1537.95x1 lm		
NAME: 2318.113-LEE-24-HE	TYPE:	WEIGHT:
SPEC.: 3000K	DIM.:	SERIAL No.: 2405230577
MFR.: RISE	SUR.: 0.000961625m2	Shielding Angle:

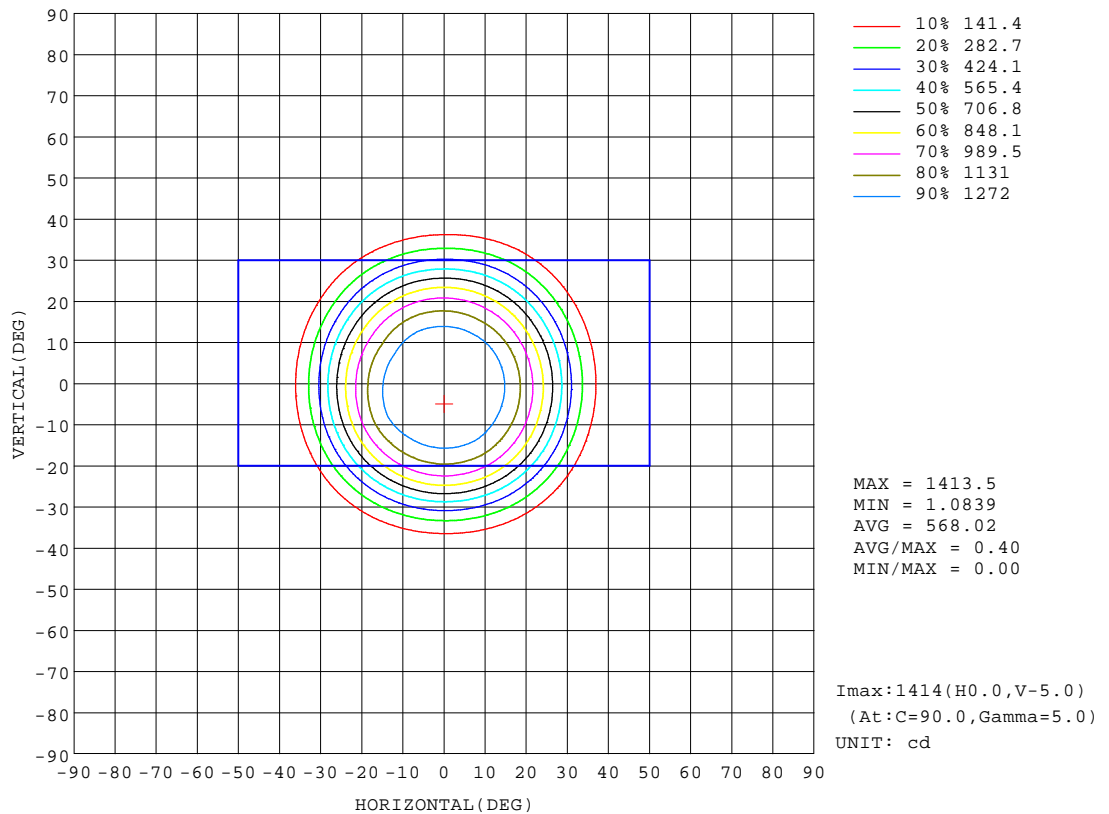
REFLECTANCE										
Ceiling	0.8	0.8	0.8	0.7	0.7	0.7	0.5	0.5	0.5	0
Walls	0.7	0.5	0.3	0.7	0.5	0.3	0.7	0.5	0.3	0
Working plane	0.2	0.2	0.2	0.2	0.2	0.2	0.2	0.2	0.2	0
ROOM INDEX	UTILIZATION FACTORS(PERCENT) $k(RI) \times RCR = 5$									
k = 0.60	58	54	52	58	54	52	57	54	52	50
0.80	62	59	57	62	59	57	61	58	57	54
1.00	65	62	60	64	61	59	63	61	59	57
1.25	67	64	62	66	64	62	65	63	61	59
1.50	69	66	64	68	65	64	67	65	63	60
2.00	70	68	66	69	67	65	68	66	64	61
2.50	71	69	67	70	68	67	68	67	65	62
3.00	72	70	68	71	69	68	69	67	66	62
4.00	73	72	70	72	70	69	70	69	68	63
5.00	74	73	72	73	71	71	70	69	69	64
ROOM INDEX	UF(total)									Direct
According to DIN EN 13032-2 2004			Suspended					SHRNOM = 1.25		

C Range: 0 - 360DEG
C Interval: 30.0DEG
Test Speed: HIGH
Temperature:25.3℃
Operators:zoe
Test Date:2024-5-23

γ Range: 0 - 180DEG
γ Interval: 1.0DEG
Test System:EVERFINE GO-SPEX500_V1 SYSTEM V2.00.461
Humidity:65.0%
Test Distance:3.160m [K=1.0000]
Remarks: LAMP:BXRE-30G10TH-A-83 Ra:90
LENS:PM-1082C-WH 50R
NO DRIVER:300mA
30minutes warm-up

ISOCANDELA DIAGRAM

Test:U:33.764V I:0.3000A P:10.129W PF:1.0000 Freq:0Hz Lamp Flux:1537.95x1 lm		
NAME: 2318.113-LEE-24-HE	TYPE:	WEIGHT:
SPEC.: 3000K	DIM.:	SERIAL No.: 2405230577
MFR.: RISE	SUR.: 0.000961625m2	Shielding Angle:

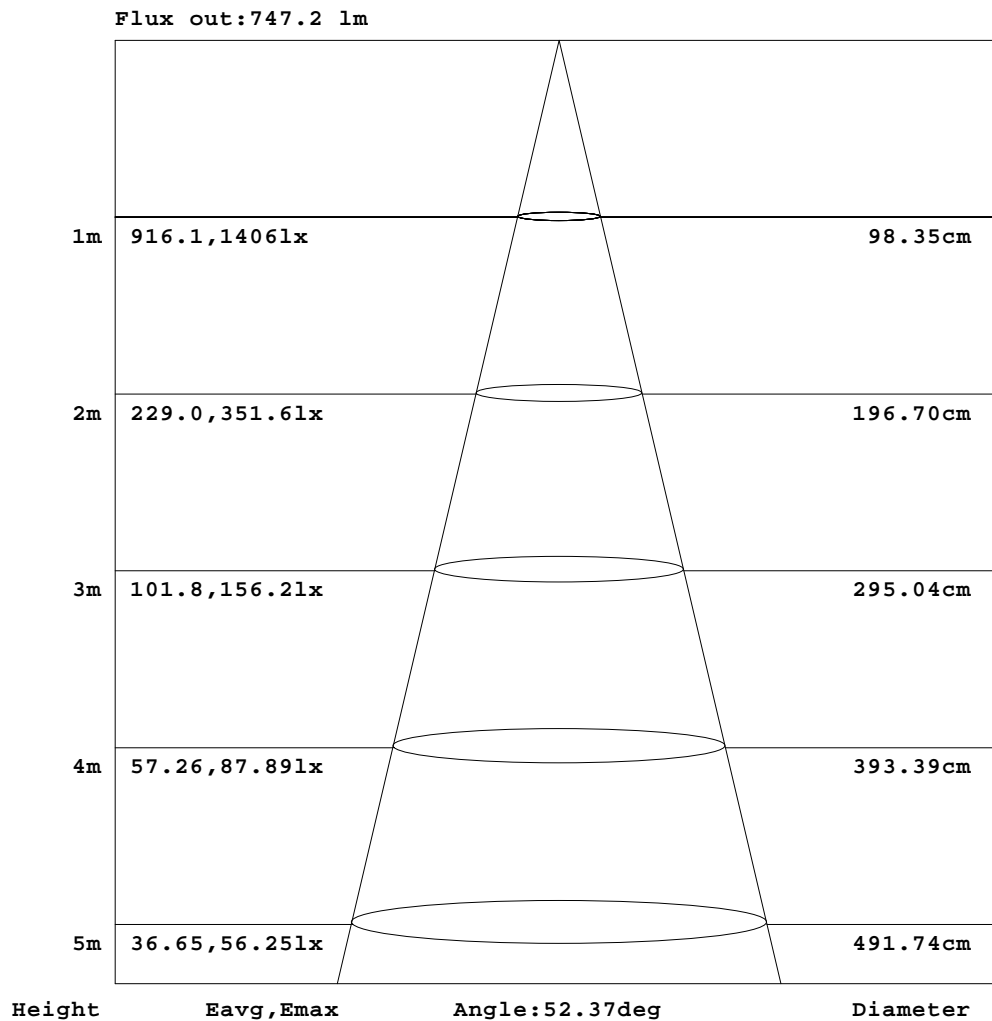


C Range: 0 - 360DEG
C Interval: 30.0DEG
Test Speed: HIGH
Temperature:25.3℃
Operators:zoe
Test Date:2024-5-23

γ Range: 0 - 180DEG
γ Interval: 1.0DEG
Test System:EVERFINE GO-SPEX500_V1 SYSTEM V2.00.461
Humidity:65.0%
Test Distance:3.160m [K=1.0000]
Remarks: LAMP:BXRE-30G10TH-A-83 Ra:90
LENS:PM-1082C-WH 50R
NO DRIVER:300mA
30minutes warm-up

AAI Figure

Test:U:33.764V I:0.3000A P:10.129W PF:1.0000 Freq:0Hz Lamp Flux:1537.95x1 lm		
NAME: 2318.113-LEE-24-HE	TYPE:	WEIGHT:
SPEC.: 3000K	DIM.:	SERIAL No.: 2405230577
MFR.: RISE	SUR.: 0.000961625m2	Shielding Angle:



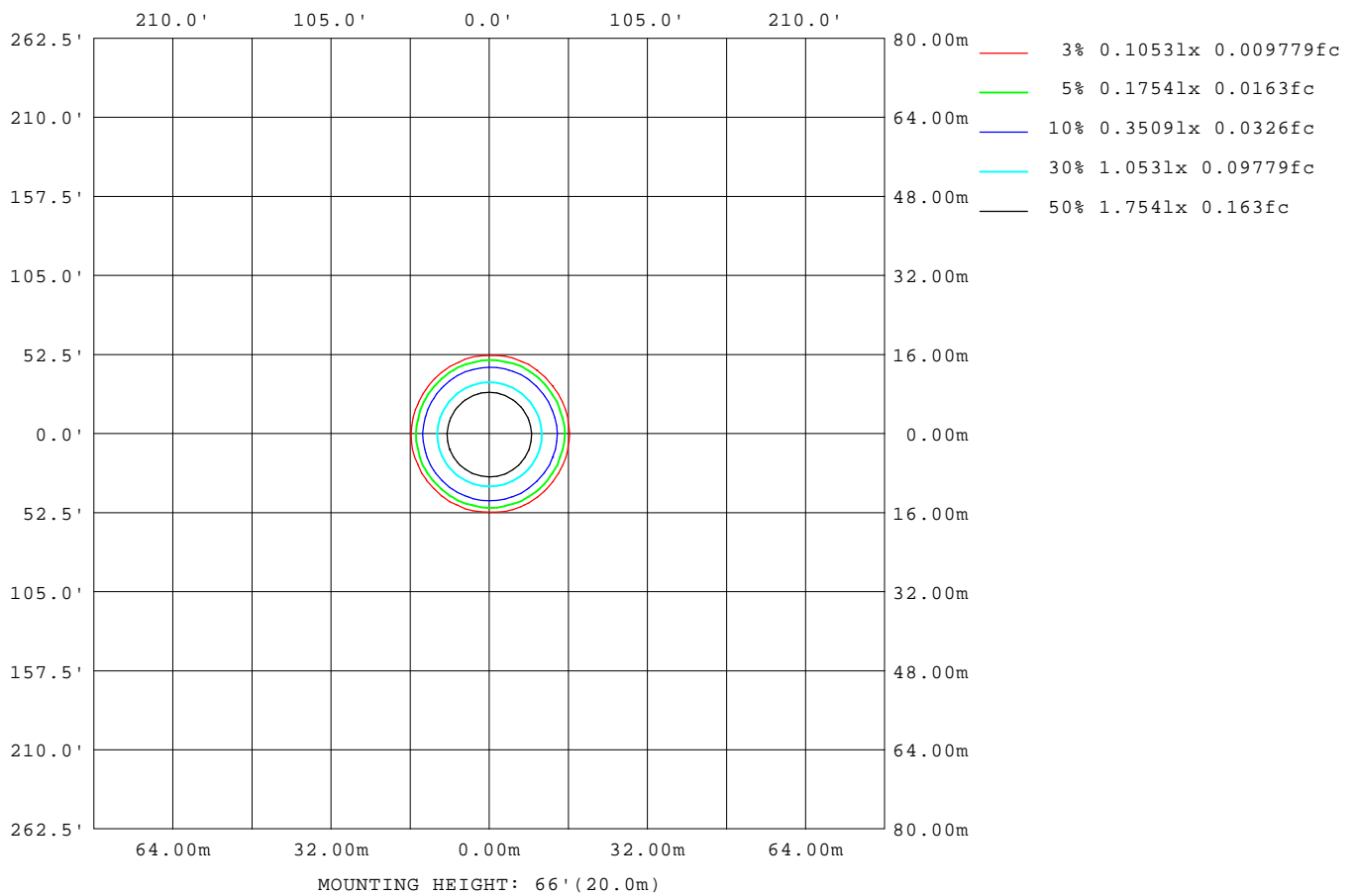
Note:The Curves indicate the illuminated area and the average illumination when the luminaire is at different distance.

C Range: 0 - 360DEG
C Interval: 30.0DEG
Test Speed: HIGH
Temperature:25.3℃
Operators:zoe
Test Date:2024-5-23

γ Range: 0 - 180DEG
γ Interval: 1.0DEG
Test System:EVERFINE GO-SPEX500_V1 SYSTEM V2.00.461
Humidity:65.0%
Test Distance:3.160m [K=1.0000]
Remarks: LAMP:BXRE-30G10TH-A-83 Ra:90
LENS:PM-1082C-WH 50R
NO DRIVER:300mA
30minutes warm-up

ISOLUX DIAGRAM

Test:U:33.764V I:0.3000A P:10.129W PF:1.0000 Freq:0Hz Lamp Flux:1537.95x1 lm		
NAME: 2318.113-LEE-24-HE	TYPE:	WEIGHT:
SPEC.: 3000K	DIM.:	SERIAL No.: 2405230577
MFR.: RISE	SUR.: 0.000961625m2	Shielding Angle:



C Range: 0 - 360DEG
C Interval: 30.0DEG
Test Speed: HIGH
Temperature:25.3℃
Operators:zoe
Test Date:2024-5-23

γ Range: 0 - 180DEG
γ Interval: 1.0DEG
Test System:EVERFINE GO-SPEX500_V1 SYSTEM V2.00.461
Humidity:65.0%
Test Distance:3.160m [K=1.0000]
Remarks: LAMP:BXRE-30G10TH-A-83 Ra:90
LENS:PM-1082C-WH 50R
NO DRIVER:300mA
30minutes warm-up

LED Avg.L Report

Test:U:33.764V I:0.3000A P:10.129W PF:1.0000 Freq:0Hz Lamp Flux:1537.95x1 lm		
NAME: 2318.113-LEE-24-HE	TYPE:	WEIGHT:
SPEC.: 3000K	DIM.:	SERIAL No.: 2405230577
MFR.: RISE	SUR.: 0.000961625m2	Shielding Angle:

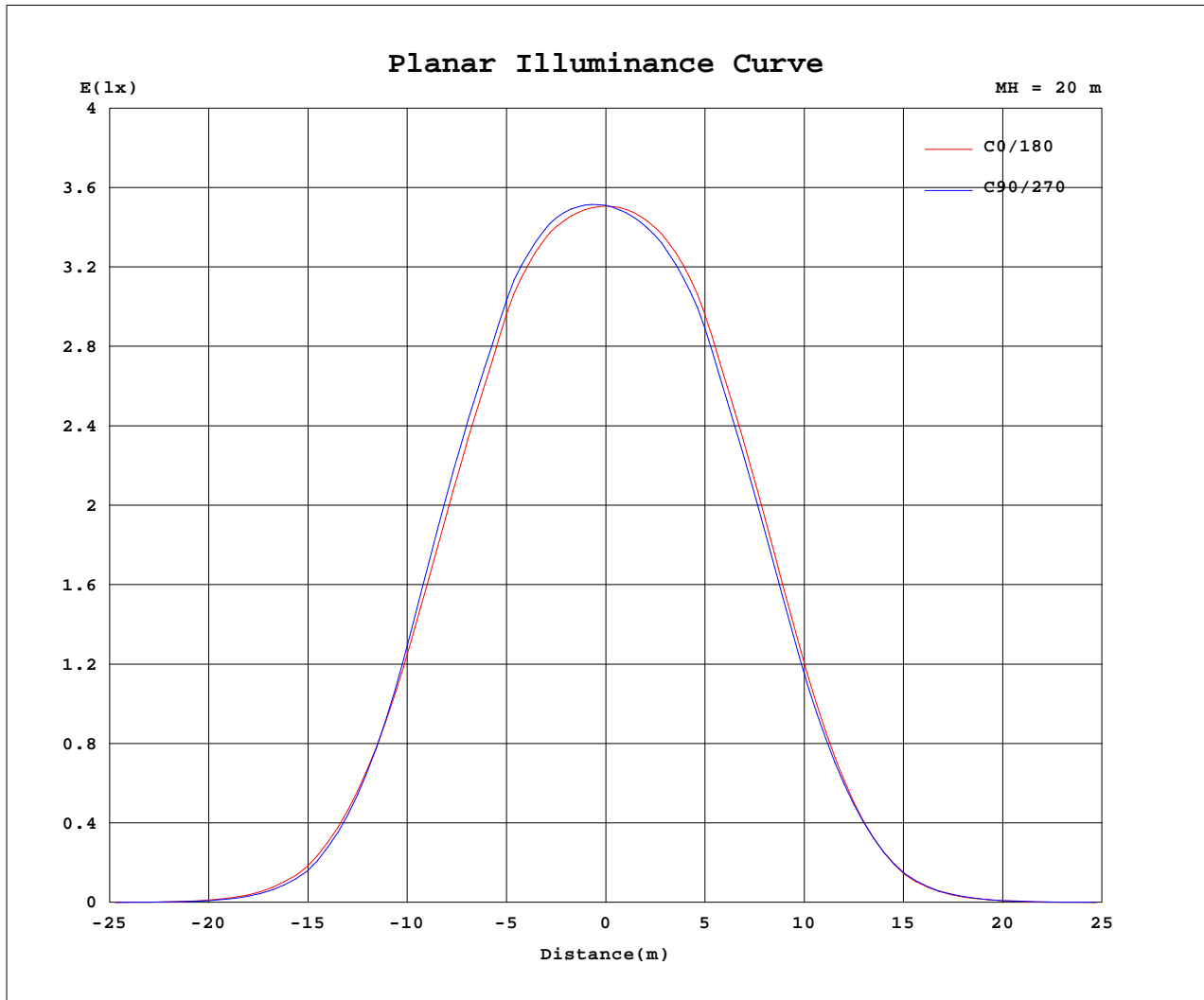
AvgL	cd/m2
L_0~180(65)av	598
L_0~180(75)av	508
L_0~180(85)av	574
L_90~270(65)av	729
L_90~270(75)av	576
L_90~270(85)av	540
L_45(65)av	731
L_45(75)av	568
L_45(85)av	520

Standard: GB/T 29293-2012

C Range: 0 - 360DEG
C Interval: 30.0DEG
Test Speed: HIGH
Temperature:25.3℃
Operators:zoe
Test Date:2024-5-23

γ Range: 0 - 180DEG
γ Interval: 1.0DEG
Test System:EVERFINE GO-SPEX500_V1 SYSTEM V2.00.461
Humidity:65.0%
Test Distance:3.160m [K=1.0000]
Remarks: LAMP:BXRE-30G10TH-A-83 Ra:90
LENS:PM-1082C-WH 50R
NO DRIVER:300mA
30minutes warm-up

Planar Illuminance Curve



C Range: 0 - 360DEG
 C Interval: 30.0DEG
 Test Speed: HIGH
 Temperature: 25.3 °C
 Operators: zoe
 Test Date: 2024-5-23

γ Range: 0 - 180DEG
 γ Interval: 1.0DEG
 Test System: EVERFINE GO-SPEX500_V1 SYSTEM V2.00.461
 Humidity: 65.0%
 Test Distance: 3.160m [K=1.0000]
 Remarks: LAMP: BXRE-30G10TH-A-83 Ra: 90
 LENS: PM-1082C-WH 50R
 NO DRIVER: 300mA
 30minutes warm-up



LUMINOUS DISTRIBUTION INTENSITY DATA

Test:U:33.764V I:0.3000A P:10.129W PF:1.0000 Freq:0Hz Lamp Flux:1537.95x1 lm		
NAME: 2318.113-LEE-24-HE	TYPE:	WEIGHT:
SPEC.: 3000K	DIM.:	SERIAL No.: 2405230577
MFR.: RISE	SUR.: 0.000961625m2	Shielding Angle:

Table--1

UNIT: cd

C(DEG) γ (DEG)	0	30	60	90	120	150	180	210	240	270	300	330						
0	1404	1404	1404	1404	1404	1404	1404	1404	1404	1404	1404	1404						
5	1400	1406	1411	1413	1412	1408	1399	1392	1388	1386	1389	1393						
10	1373	1382	1393	1393	1391	1392	1371	1351	1351	1346	1349	1360						
15	1264	1278	1298	1297	1293	1301	1265	1236	1243	1232	1233	1248						
20	1069	1092	1114	1115	1105	1099	1064	1037	1034	1029	1027	1042						
25	798	820	833	834	822	806	778	752	748	746	755	764						
30	483	491	491	481	476	467	451	434	435	435	451	456						
35	221	220	213	203	197	194	185	174	181	185	205	206						
40	69.0	65.7	65.9	58.2	56.1	51.3	50.9	45.2	50.2	52.7	63.2	64.0						
45	14.5	12.7	12.5	11.5	11.3	10.7	10.7	10.3	12.1	11.9	13.7	13.8						
50	3.17	3.16	3.03	2.77	2.72	2.76	2.64	2.83	3.38	3.14	3.04	2.92						
55	1.33	1.35	1.25	1.06	1.06	1.10	1.10	1.32	1.63	1.52	1.35	1.29						
60	0.66	0.68	0.59	0.44	0.41	0.44	0.49	0.67	0.91	0.84	0.72	0.67						
65	0.31	0.33	0.27	0.16	0.12	0.14	0.17	0.31	0.49	0.44	0.37	0.33						
70	0.22	0.23	0.20	0.11	0.08	0.08	0.10	0.20	0.33	0.29	0.25	0.23						
75	0.16	0.15	0.13	0.09	0.07	0.07	0.09	0.14	0.21	0.20	0.18	0.17						
80	0.10	0.08	0.07	0.07	0.06	0.06	0.08	0.09	0.11	0.11	0.10	0.10						
85	0.05	0.04	0.04	0.03	0.04	0.04	0.04	0.05	0.05	0.06	0.05	0.05						
90	0.00	0.00	0.00	0.00	0.00	0.00	0.00	0.00	0.00	0.00	0.00	0.00						
95	0.00	0.00	0.00	0.00	0.00	0.00	0.00	0.00	0.00	0.00	0.00	0.00						
100	0.00	0.00	0.00	0.00	0.00	0.00	0.00	0.00	0.00	0.00	0.00	0.00						
105	0.00	0.00	0.00	0.00	0.00	0.00	0.00	0.00	0.00	0.00	0.00	0.00						
110	0.00	0.00	0.00	0.00	0.00	0.00	0.00	0.00	0.00	0.00	0.00	0.00						
115	0.00	0.00	0.00	0.00	0.00	0.00	0.00	0.00	0.00	0.00	0.00	0.00						
120	0.00	0.00	0.00	0.00	0.00	0.00	0.00	0.00	0.00	0.00	0.00	0.00						
125	0.00	0.00	0.00	0.00	0.00	0.00	0.00	0.00	0.00	0.00	0.00	0.00						
130	0.00	0.00	0.00	0.00	0.00	0.00	0.00	0.00	0.00	0.00	0.00	0.00						
135	0.00	0.00	0.00	0.00	0.00	0.00	0.00	0.00	0.00	0.00	0.00	0.00						
140	0.00	0.00	0.00	0.00	0.00	0.00	0.00	0.00	0.00	0.00	0.00	0.00						
145	0.00	0.00	0.00	0.00	0.00	0.00	0.00	0.00	0.00	0.00	0.00	0.00						
150	0.00	0.00	0.00	0.00	0.00	0.00	0.00	0.00	0.00	0.00	0.00	0.00						
155	0.00	0.00	0.00	0.00	0.00	0.00	0.00	0.00	0.00	0.00	0.00	0.00						
160	0.00	0.00	0.00	0.00	0.00	0.00	0.00	0.00	0.00	0.00	0.00	0.00						
165	0.00	0.00	0.00	0.00	0.00	0.00	0.00	0.00	0.00	0.00	0.00	0.00						
170	0.00	0.00	0.00	0.00	0.00	0.00	0.00	0.00	0.00	0.00	0.00	0.00						
175	0.00	0.00	0.00	0.00	0.00	0.00	0.00	0.00	0.00	0.00	0.00	0.00						
180	0.00	0.00	0.00	0.00	0.00	0.00	0.00	0.00	0.00	0.00	0.00	0.00						

C Range: 0 - 360DEG
C Interval: 30.0DEG
Test Speed: HIGH
Temperature:25.3℃
Operators:zoe
Test Date:2024-5-23

γ Range: 0 - 180DEG
γ Interval: 1.0DEG
Test System:EVERFINE GO-SPEX500_V1 SYSTEM V2.00.461
Humidity:65.0%
Test Distance:3.160m [K=1.0000]
Remarks: LAMP:BXRE-30G10TH-A-83 Ra:90
LENS:PM-1082C-WH 50R
NO DRIVER:300mA
30minutes warm-up